

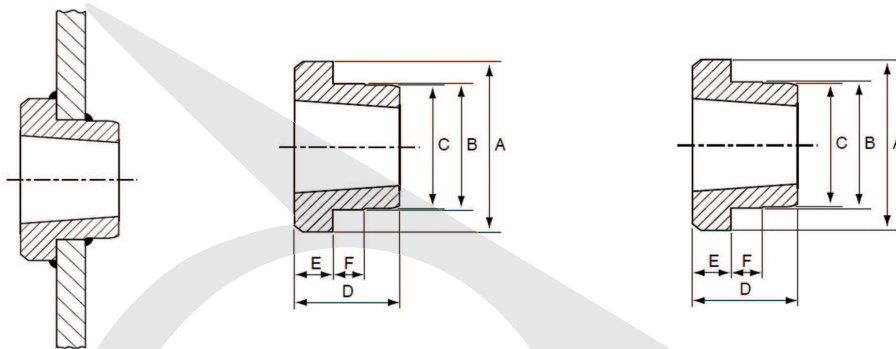


## WELD ON HUBS

### Description

Taper Bore Weld-on-Hubs are made out of steel, drilled, tapped and taper bored to receive standard Taper Bushes. The extended flange provides a convenient means of welding hubs into fan rotors, steel pulleys, plate sprockets, impellers and other devices which must be firmly fastened to the shaft.

Weld-on-Hubs are easy to install and entirely suitable for use where severe operating conditions are met. Weld-on-Hubs are manufactured to complement the Taper Bush range. All are manufactured from C45 Steel.



Typical Assembly

W Weld-on-Hub

WH Weld-on-Hub

### W WELD-ON-HUBS

Hub Reference	Bush Number	A	B	C	D	E	F
W12	1215	73.03	63.50	62.71	38.10	15.88	9.53
W16	1615	82.55	73.03	72.24	38.10	15.88	9.53
W20	2017	101.60	80.90	88.11	44.45	19.05	14.45
W25	2517	127.00	111.13	110.34	44.45	19.05	12.70
W30	3030	149.86	133.35	132.56	76.20	25.40	19.05
W35	3535	184.15	158.75	157.96	88.90	31.75	25.40
W40	4040	225.43	196.85	196.06	101.60	31.75	31.75
W45	4545	254.00	222.25	221.46	114.30	38.10	38.10

### WH WELD-ON-HUBS

Hub Reference	Bush Number	A	B	C	D	E	F
WH12	1210	70	65	64.5	25	9	10
WH16-1	1610	80	75	74.5	25	9	10
WH20	2012	95	90	89.5	32	12	12
WH25	2517	115	110	109.5	44	19	15
WH30	3020	145	140	139.5	50	20	15
WH35	3525	190	180	179.5	65	25	25
WH40-1	4030	200	190	189.0	76	32	30
WH40-2	4040	200	190	189.5	101	32	30
WH45-1	4535	210	200	190.5	89	40	30
WH45-2	4545	210	200	190.5	114	40	30
WH50-1	5040	230	220	210.5	102	40	35
WH50-2	5050	230	220	219.5	127	40	35