

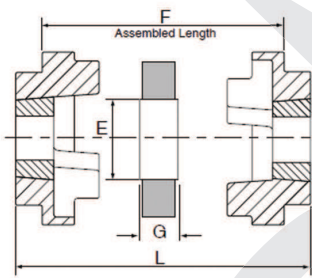


HRC COUPLINGS

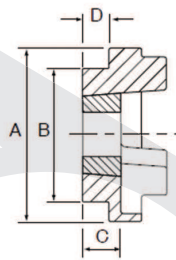
Description

HRC coupling flanges are available in either F (Taper Bush fits inside) or H (Taper Bush fits outside) or pilot bored (PB) which can be bored in house to the required size. These semi-elastic couplings are designed for general purpose use, they permit quick and easy assembly by means of taper bush fixing to the mating shaft.

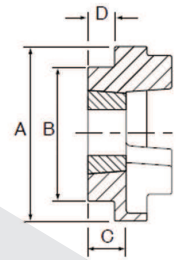
Inserts are available in either natural rubber for use in ambient temperatures between -50°C & +50°C or chloroprene rubber for use in temperatures between -15°C and +70°C fire resistance and anti-static properties (F.R.A.S).



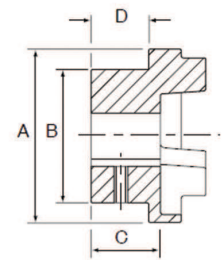
HRC Assembly



F Flange (Taper Bore)



H Flange (Taper Bore)



B Flange (Pilot Bore)

HRC COUPLINGS

Coupling No.	Nominal torque Nm	Overall Diameter A	Hub Diameter B	Flange Length F	Insert Bore Dia E	Insert Width G	Parallel Misalignment (mm)	Weight (kg)	Assembled Length		
									L FF, FH, HH	L FB, HB	L BB
HRC70	31	69	60	25.5	31	18.5	0.3	1.00	65.5	65.5	65.5
HRC90	80	85	70	30.5	32	22.5	0.3	1.17	69.5	76.5	82.5
HRC110	160	112	100	45.5	45	29.5	0.3	5.00	82.5	100.5	119.5
HRC130	315	130	105	53.5	50	36.5	0.4	5.46	89.5	110.5	131.5
HRC150	600	150	115	60.5	62	40.5	0.4	7.11	107.5	129.5	152.5
HRC180	950	180	125	73.5	77	49.5	0.4	16.65	142.5	165.5	189.5
HRC230	2000	225	155	85.5	99	59.5	0.5	26.05	164.5	202.5	239.5
HRC280	3150	275	206	105.5	119	74.5	0.5	50.05	207.5	246.5	285.5

Angular misalignment capacity up to 1 deg. Mass is for an FF, FH or HH coupling with mid range Taper Bushes

F refers to combinations of flanges: FF, FH, HH, FB, HB, BB.

HRC TYPE F & H

Coupling No.	Bush Size	(mm)	(ins)	Shoulder Width D	Hub Width C
HRC70	1008	25	1	20.0	23.5
HRC90	1108	28	1.1/8	19.5	23.5
HRC110	1610	42	1.5/8	18.5	26.5
HRC130	1610	42	1.5/8	18.0	26.5
HRC150	2012	50	2	23.5	33.5
HRC180	2517	60	2.1/2	34.5	46.5
HRC230	3020	75	3	39.5	52.5
HRC280	3525	100	4	51.0	66.5

HRC TYPE B

Coupling No.	Max Bore (mm)	Pilot Bore (mm)	Keyway Screw Size	Shoulder Width D	Hub Width C
HRC70	32	8	M6	20	23.5
HRC90	42	10	M6	26	30.5
HRC110	55	10	M10	37	45.5
HRC130	60	15	M10	39	47.5
HRC150	70	20	M10	46	56.5
HRC180	80	25	M10	58	70.5
HRC230	100	25	M12	77	90.5
HRC280	115	30	M16	90	105.5